



## AV762WDIR

Thank you for purchasing our product. Before attempting to connect or operate this product please read the instructions carefully in this manual for future use.

### DESCRIPTION

AV762WDIR has advanced image technology with resolution as high as 700TVL, true color reducibility; Support 2DNR, WDR, IR SMART control, AV762WDIR comes with a powerful OSD menu that include motion detection, privacy mask, HLC, BLC, multiple languages, and other functions. A waterproof combined with a 3-Axis directional bracket allows for customized viewing and 24 hour monitoring, simple operation.

### PRECAUTIONS

#### 1. Use the Appropriate Power Supply

The input power for AV762WDIR is DC 12V. Be sure to connect it to the appropriate power. Wrong connection may cause malfunction and /or damage to the video camera.

#### 2. Do not attempt to disassemble the camera.

To prevent electric shock, do not remove screws or covers. There are no user serviceable parts inside. Ask a qualified service person for servicing.

#### 3. Handle the camera with care.

Do not abuse the camera. Avoid striking, shaking, etc. The camera could be damaged by improper handling or storage.

#### 4. Do not expose the camera to rain or moisture, or try to operate it in wet areas.

Do not place the camera in the following locations:

- ① Locations where temperature is lower than -20°C or higher than 55°C;
- ② Locations where humidity is higher than 90%;
- ③ Locations where there are large amounts of water vapor and steam.

#### 5. Clean the CCD faceplate with care

When cleaning the CCD panel, do not use strong or abrasive detergents. Use a piece of lens tissue or cotton tipped applicator and ethanol.

#### 6. Do not attempt to aim the camera at the sun

Do not attempt to aim the camera at the sun or other extremely bright objects that cause smear to appear irrespective of whether the camera is operating or not. This can damage the CCD (Charge Coupled Device).

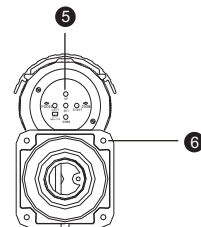
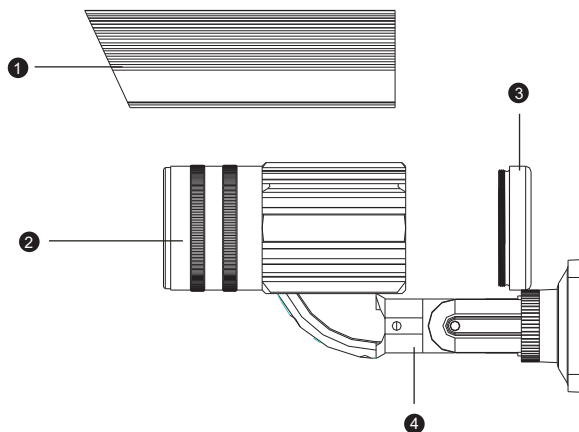
#### 7. Do not put the camera in a place with interference.

When this camera is installed near the equipment like wireless communication device that emits strong electromagnetic field, some irregularity such as noise on monitor screen may happen.

### FEATURES

1. 1/3" SONY 960H CCD;
2. High resolution, 700TVL, true color reducibility.
3. Support 2DNR
4. WDR
5. IR SMART control
6. Waterproof design
7. 3-Axis directional bracket, for adjusting camera angles, simple operation
8. OSD menu

### PARTS INSTRUCTION

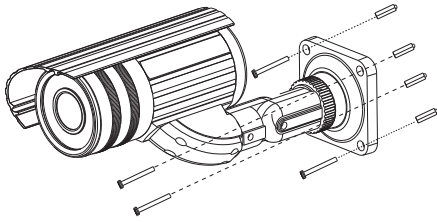


1. Hood
2. Camera body
3. Back cover
4. 3 axis bracket
5. OSD (take off the back cover)
6. Four install screw holes (at bottom of the bracket)

## Setup

### ■ Camera installation

1. Using the foam pat to locate holes in the wall
2. Drill 4 holes in the position needed in accordance with the installation hole on the subpanel of the bracket, push the expansion bolt inside then tighten the screws, make the installation hole aim at the four screws and fix it.
3. Get the wire out from the bottle of the bracket.



### ■ Assembly instruction of 3D cable bracket

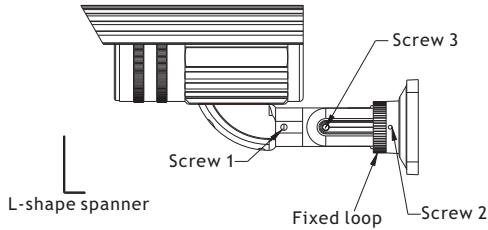


Figure 1

Take the screws out of the accessories pouch and use L-shape spanner to assemble, as shown in the figure 1

### ■ Adjustment instruction of 3D bracket

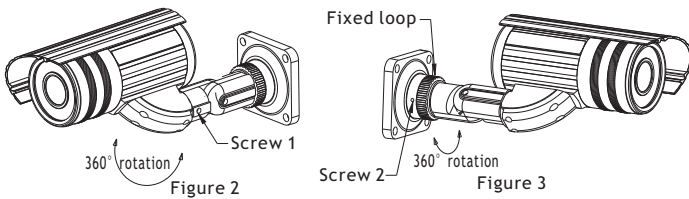


Figure 2

As shown in the figure 2, loosen the screw 1 to rotate 360°

Figure 3

As shown in the figure 3, loosen the screw 2 and the fixed loop to rotate 360°

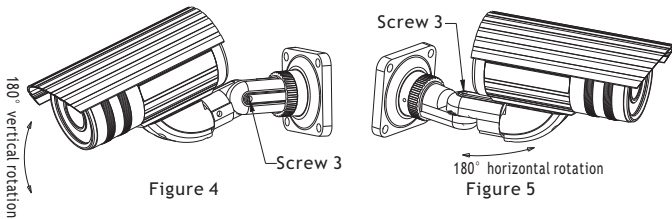
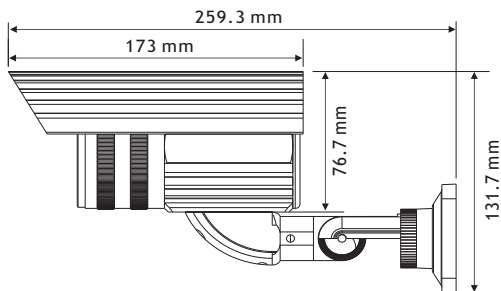


Figure 4

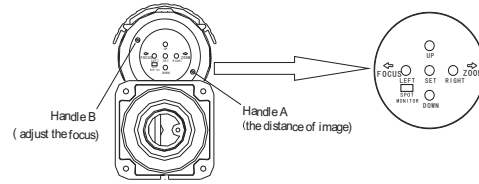
As shown in the figures 4 and 5, loosen the screw 3 to rotate 180° from up to down or from left to right

## Appearance size



## Menu operation

In camera the key to set the camera



OSD function set:

SET: choose function or back to last level.

Up/down: Up or down to move vertically.

Left/right: to move left or right horizontally or modify parameters

## Main menu

LENS	◆DC	◆MANUAL
EXPOSURE	◆SHUTTER	◆AGC
	◆WDR	◆RETURN
WHITE BAL	◆ATW	◆ANTI.CRL
	◆AWB	◆MANUAL
	◆AWC→SET	
BACKLIGHT	◆HLC	◆BLC
	◆OFF	
DAY&NIGHT	◆AUTO	◆COLOR
	◆EXT	◆B/W
DPC	◆START	◆DPC VIEW
	◆LS VALUE	◆DIFF
	◆AREA HS	◆AREA HE
	◆AREA VS	◆AREA VE
	◆RETURN	
SPECIAL	◆CAM TITLE	◆MOTION
	◆PRIVACY	◆PARK.LINE
	◆IMAGE ADJ.	◆COMM ADJ.
	◆LANGUAGE	◆VERSION
EXIT	◆SAVE	◆NOT SAVE
	◆RESET	

## Specifications

Pick up device	1/3" Sony 960H CCD
Effective pixels	PAL:976(H)*582(V)  NTSC:976(H)*494(V)
Scanning system	2:1 interlaced
Sync. System	Internal
Resolution	700 TVLines
Lens	2.8-12mm
O.S.D	Built-in
White balance	ATW/AWB/AWC->SET/ANTI.CRL/MANUAL
AGC	High, Middle, Low, Off
HLC/BLC	ON/OFF/AUTO
NR	2D noise reduction
Mirror function	ON/OFF
Image adjustment	Contrast/Sharpness
WDR	ON/OFF
Motion detection	Off/on(4 areas)
Privacy zones	Off/on(8 areas)
Day & night	Auto / B/W / Exton / Color
S/N ratio	more than 52dB (AGC off)
Electronic shutter	Auto(1/60(1/50)~1/100,000)/Fixed/Manual
Video output	1.0Vp-p composite video output, 75Ω
IR distance	20~30M/36 Units infrared LED(φ 5mm/850nm)
Min. Illumination	0 Lux(IR on)
Power supply	DC12V ±10%
Current consumption	200mA(IR Off),450mA(IR On)
Operation temperature	-20°C ~ 55°C
Dimension	76.7(W)*131.7(H)*259.3(L)mm
Weight	950g

\*Specifications subject to change without notice